

PLASTER SAW „ELECTRONIC POWER“

500 Watt

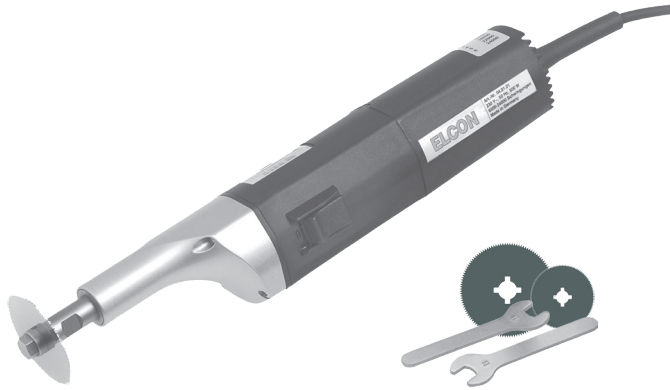


Grau dargestellte Artikelnummern bezeichnen „distributed by ELCON“ Produkte
Article numbers shown in grey indicate „distributed by ELCON“ products
Los numeros de articulos mostrados en gris indican productos „distribuidos por ELCON“
Les numéros d’articles affichés en gris indiquent les produits „distribués par ELCON“

ELCON 400

GIPSSÄGE
PLASTER SAW
SIERRA DE YESO
SCIE A PLATRE

PLASTER SAW, OSCILLATING



04-MST-00001 Plaster Saw, 230 V / 50-60 Hz

including:

- 1 x sawblade Ø 50 mm for standard plaster (04-MST-00004)
- 1 x sawblade Ø 65 mm for standard plaster (04-MST-00007)
- 1 x pair of wrenches 11 mm
- 1 x instruction manual

TECHNICAL DATA

- 500 Watt power
- 3500 to 24000 oscillations, infinitely variable
- Fully automatic power-compensation
- Slim motor design with silent motor 52 – 77 dB(A)
- Latest electronic system with various protection and security functions
- Soft Start at switch-on to minimize accident risk and to save all mechanical and electrical components
- Special positioning of the motor
- Robust construction for highest loading capacity by continuous operation
- Safety ON / OFF switch
- Weight only 1,25 kg without cable
- Vibration- and maintenance-free
- 5 meter cable with EU-connection, 230 Volt
3 meter cable with US-connection, 110 Volt
- Double protection isolation according to class II, medical use of type BF
- Radio and TV suppressed
- EN 60601-1, EN 60601-1-2, IEC 60601-1, IEC 60601-1-2 inspected
- 2 years warranty / 1 year guarantee on engine and transmission part (in case of proper use)

04-MST-00013 Transport case, plastic

PLASTER SAW, with dust collector



04-MST-00023 Plaster Saw with dust collector, 230 V / 50-60 Hz

including:

- 1 x sawblade Ø 50 mm for standard plaster (04-MST-00004)
- 1 x sawblade Ø 65 mm for standard plaster (04-MST-00007)
- 1 x pair of wrenches 11 mm
- 1 x instruction manual

TECHNICAL DATA - dust collector

- 500 - 1200 Watt power, vacuum motor
- Continuous Power Output max. 1200 Watt,
- Max. Power Output 1450 Watt PT,
- HEPA-Filter 99,97% of all particles which are >= 0,3 micron are filtered
- Automatic turn on/off of the cleaner with the turn on/off of the plaster saw
- When plaster saw is turned off, the cleaner will go off 6-10 sec. later to clean the hole system
- Robust construction for highest loading capacity
- Max. vacuum 2100 mm/H₂O, vacuum motor
- Max. vacuum 1900 mm/H₂O, vacuum machine
- Air flow motor 62 lt./sec. in the machine, due to all the filters the air flow goes down to 40 lt./sec.
- Electronic power control 500 W – 1200 W
- Max. total power (system) 1600 Watt, controlled
- Noise level vacuum only, 63 – 69 dB(A)
- Antistatic cleaner tube
- Control lamp for full dust bag
- Cleaner tube is in the pipe and not on the floor

04-MST-00027 HEPA Filter

04-MST-00028 Dust Bag

04-MST-00029 Perfume Stick

04-MST-00030 Motor Filter

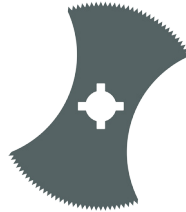
04-MST-00013 Transport case, plastic (saw only)

SAW BLADES



Saw Blades, for standard plaster

04-MST-00010	Ø 45 mm
04-MST-00004	Ø 50 mm
04-MST-00007	Ø 65 mm



Saw Blades, for standard plaster

04-MST-00014	Ø 65 mm
--------------	---------



Saw Blades, for standard plaster

04-MST-00016	Ø 65 mm
--------------	---------

Saw Blades, for synthetic casts

04-MST-00011	Ø 45 mm
04-MST-00005	Ø 50 mm
04-MST-00008	Ø 65 mm

Saw Blades, for synthetic casts

04-MST-00015	Ø 65 mm
--------------	---------

Saw Blades, for synthetic casts

04-MST-00017	Ø 65 mm
--------------	---------

**Saw Blades, PTFE non-stick coating
for all kind of plasters / casts**

04-MST-00006	Ø 50 mm
04-MST-00009	Ø 65 mm



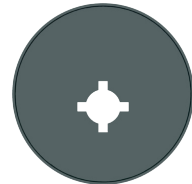
Saw Blades, for standard plaster

04-MST-00018	8 mm
--------------	------



Saw Blades, for standard plaster

04-MST-00020	20 mm
--------------	-------



Eccentric disc, to limit cutting depth

04-MST-00022

Saw Blades, for synthetic casts

04-MST-00019	8 mm
--------------	------

Saw Blades, for synthetic casts

04-MST-00021	20 mm
--------------	-------



Wrench, pair 11 mm

04-MST-00012

ELCON

MEDICAL INSTRUMENTS GmbH

D - 78532 Tuttlingen
Tel: +49 7461 9281-0
info@elcon-medical.de

Dr. Karl-Storz-Str. 26
Fax: +49 7461 9281-29
www.elcon-medical.com